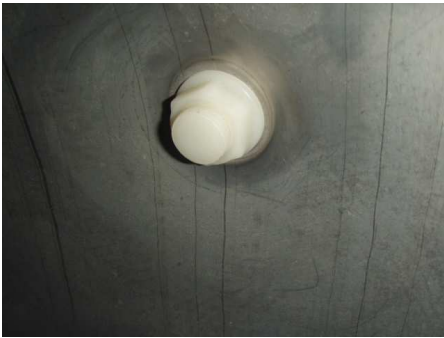


Extractors

When you first open your extractor there are a few items that need to be checked to ensure that it is in perfect order and will effectively extract honey from frames. The points to check are:

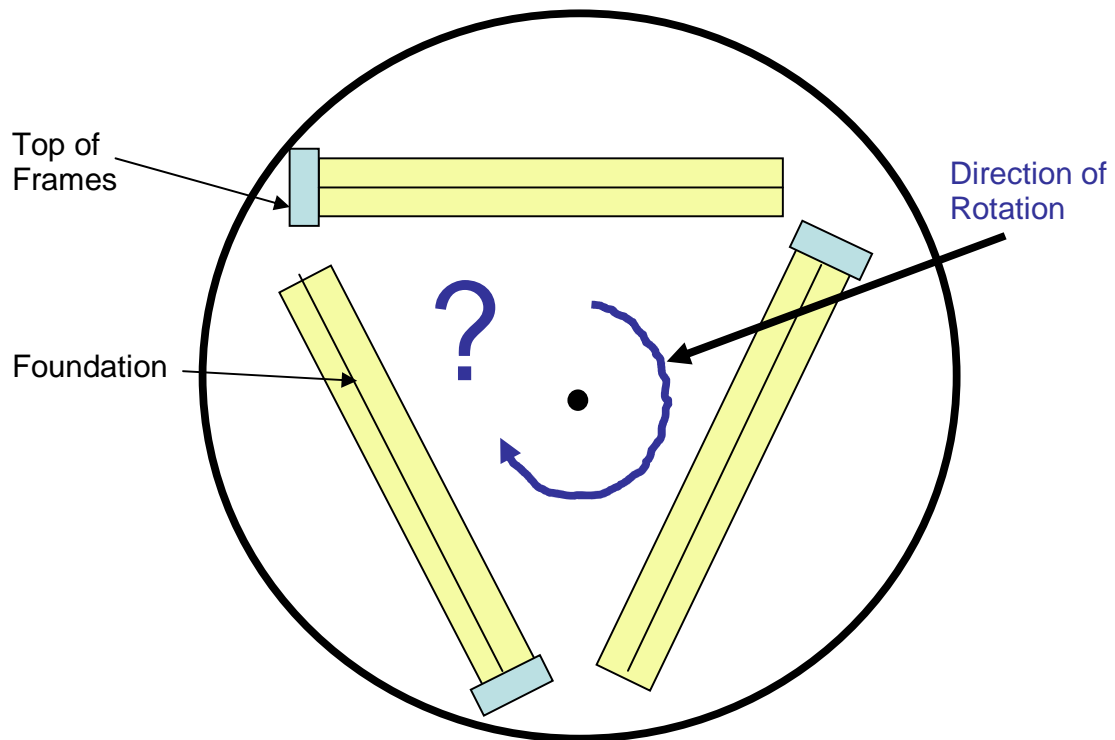
1. At the bottom of the drum the spindle holding the cage sits in a large hollow plastic bolt that goes through the drum. Make sure that this bolt is tight by turning the screw as if to tighten it.



2. Also, the spindle rests on ball bearing inside the plastic bolt. If you turn the drum up side down to clean it the ball bearing will fall out and may get lost. Therefore, it is a good idea to use your hand to stop the ball bearing from falling out if you turn the drum upside down.
3. Sometimes you will not have enough full frames to place in the extractor when extracting. In this situation you can fill up the slots in the cage with empty frames so that when the cage is rotated it will keep its balance and not vibrate too much.
4. Occasionally with a new extractor you may experience difficulty removing the handle from the round metal rod at the top of the extractor. To overcome this use a file to remove any burr at the end of the round rod until you are able to remove the handle.



5. In order to clean the extractor after use, I place cold soapy water in it to the top and rotate the cage to dissolve the honey. Once I have done this I remove the cage and wash down the drum with a hose and a sponge. I let the water drain out of the drum by leaving the honey gate at the bottom open. The cage is a bit harder to clean and I take this indoors and wash using hot soapy water.
6. If after using the extractor and leaving it for some time what appears to be thin film of oil forms on the side or bottom of the drum. This occurs if all the honey is not washed from the drum and forms when the acid in the honey reacts with the stainless steel. Soapy water will get rid of this.
7. When you are ready to extract the frames must be inserted into the drum the correct way as shown below. When you insert the frames, make sure that the direction of rotation is for the bottom of the frame to move forward first. If the direction is reversed very little of the honey will come out.



8. When you are extracting honey you might find that the handle gets very difficult to turn even though honey is flowing out of the gate at the bottom into a bucket. This occurs because as the drum fills up with honey, the bottom of the cage touches the top of the honey and makes the cage hard to turn. To overcome this you will need to raise the cage higher up the spindle by:
 1. slackening off the two bolts that are attaching the cage to the spindle;
 2. Moving the cage further up the spindle;
 3. Re-tightening the bolts.
9. Each frame requires about 150 turns per side. To stop the wax from breaking under the strain of the centrifugal force, turn the frame 75 times on one side, flip the frame over and rotate the frame 150 times on the other side. Finally, flip the frame once again and turn it a further 75 times. This will make 150 turns on each side.

If you have any other questions let me know.

Bob
 Bob's Beekeeping Supplies
 79 Zig Zag Road
 Eltham
 Victoria 3095

03 9439 5410
 bob@bobsbeekeeping.com.au